



±15kV ESD-Protected, EMC-Compliant, 230kbps, 3-Tx/3-Rx RS-232 IC

MAX1406

General Description

The MAX1406 is an RS-232 IC designed to meet the stringent electrostatic discharge (ESD) requirements of the European community. All transmitter outputs and receiver inputs are protected to ±15kV using IEC1000-4-2 Air-Gap Discharge, ±8kV using IEC 1000-4-2 Contact Discharge, and ±15kV using the Human Body Model.

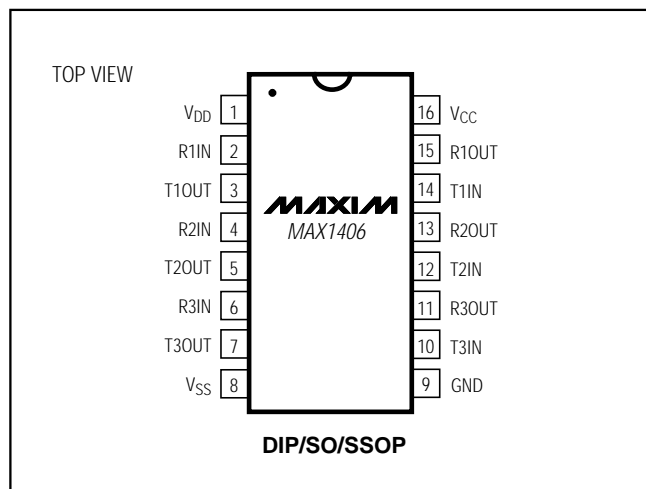
The MAX1406 has three RS-232 transmitters and three RS-232 receivers, and is optimized for operation in printer, modem, and telecom applications. It is guaranteed to run at data rates up to 230kbps, providing compatibility with popular software for communicating with personal computers. Power-supply current is less than 500µA for I_{DD} and I_{SS}, and less than 1mA for I_{CC}.

The MAX1406 is pin and functionally compatible with the industry-standard MC145406, so existing designs can instantly become Electromagnetic Compatibility (EMC) compliant. The MAX1406 is available in DIP and SO packages, and in a tiny SSOP that reduces board space.

Applications

- Telecommunications
- Modems
- Printers
- Instruments
- Equipment Meeting IEC1000-4-2

Pin Configuration



Features

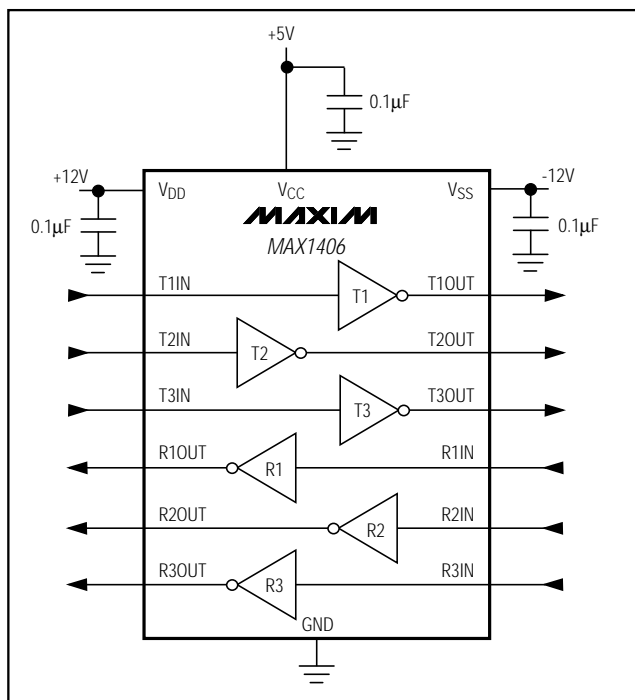
- ◆ **Enhanced ESD Protection:**
 - ±15kV Human Body Model
 - ±8kV IEC1000-4-2, Contact Discharge
 - ±15kV IEC1000-4-2, Air-Gap Discharge
- ◆ **Latchup Free During an ESD Event**
- ◆ **16-Pin SSOP or SO Packages**
- ◆ **Guaranteed 230kbps Data Rate**
- ◆ **Flow-Through Pinout**
- ◆ **Pin Compatible with MC145406**

Ordering Information

| PART | TEMP. RANGE | PIN-PACKAGE |
|------------|----------------|----------------|
| MAX1406CPE | 0°C to +70°C | 16 Plastic DIP |
| MAX1406CWE | 0°C to +70°C | 16 Wide SO |
| MAX1406CAE | 0°C to +70°C | 16 SSOP |
| MAX1406C/D | 0°C to +70°C | Dice* |
| MAX1406EPE | -40°C to +85°C | 16 Plastic DIP |
| MAX1406EWE | -40°C to +85°C | 16 Wide SO |
| MAX1406EAE | -40°C to +85°C | 16 SSOP |

*Dice are specified at T_A = +25°C, DC parameters only.

Functional Diagram



±15kV ESD-Protected, EMC-Compliant, 230kbps, 3-Tx/3-Rx RS-232 IC

ABSOLUTE MAXIMUM RATINGS

| | | |
|---------------------------------------|-----------------------------------|---|
| V _{CC} | -0.3V to +7V | Continuous Power Dissipation (T _A = +70°C) |
| V _{DD} | -0.3V to +14V | DIP (derate 10.53mW/°C above +70°C)..... |
| V _{SS} | +0.3V to -14V | Wide SO (derate 20.00mW/°C above +70°C)..... |
| Input Voltages | | SSOP (derate 8.00mW/°C above +70°C)..... |
| T _{IN} | -0.3V to +6V | Operating Temperature Ranges |
| R _{IN} | ±30V | MAX1406C_E..... |
| Output Voltages | | MAX1406E_E..... |
| T _{OUT} | ±15V | Storage Temperature Range..... |
| R _{OUT} | -0.3V to (V _{CC} + 0.3V) | Lead Temperature (soldering, 10sec)..... |
| Short-Circuit Duration | | |
| T _{OUT} (one at a time)..... | Continuous | |
| R _{OUT} (one at a time)..... | Continuous | |

Stresses beyond those listed under "Absolute Maximum Ratings" may cause permanent damage to the device. These are stress ratings only, and functional operation of the device at these or any other conditions beyond those indicated in the operational sections of the specifications is not implied. Exposure to absolute maximum rating conditions for extended periods may affect device reliability.

ELECTRICAL CHARACTERISTICS

(V_{CC} = +4.5V to +5.5V, V_{DD} = +10.8V to +13.2V, V_{SS} = -10.8V to -13.2V, T_A = T_{MIN} to T_{MAX}, unless otherwise noted. Typical values are at T_A = +25°C.)

| PARAMETER | SYMBOL | CONDITIONS | MIN | TYP | MAX | UNITS |
|--|------------------|--|-----------------------|------|-------|-------|
| DC CHARACTERISTICS | | | | | | |
| Operating Voltage Range | V _{CC} | | 4.5 | | 5.5 | V |
| | V _{DD} | | 10.8 | | 13.2 | |
| | V _{SS} | | -13.2 | | -10.8 | |
| Supply Current | I _{CC} | No load | | 230 | 1000 | μA |
| | I _{DD} | | | 185 | 500 | |
| | I _{SS} | | | 185 | 500 | |
| LOGIC | | | | | | |
| Input Logic Threshold Low | V _{ILT} | T _{IN} | | | 0.8 | V |
| Input Logic Threshold High | V _{IHT} | T _{IN} | 2.0 | | | V |
| Input Leakage Current | | | | 0.01 | 1 | μA |
| Output Voltage Low | V _{OLR} | R _{OUT} ; I _{SINK} = 3.2mA | | | 0.4 | V |
| Output Voltage High | V _{OHR} | R _{OUT} ; I _{SOURCE} = 1mA | V _{CC} - 0.6 | | | V |
| TRANSMITTER OUTPUTS | | | | | | |
| Output Voltage Swing | | V _{DD} = 7.0V, V _{SS} = -7.0V, R _L = 3kΩ | ±5.0 | | | V |
| | | V _{DD} = 12V, V _{SS} = -12V, R _L = 3kΩ | ±9.5 | | | |
| Transmitter Output Resistance | | V _{CC} = V _{DD} = V _{SS} = 0V, V _{T_OUT} = ±2V | 300 | | | Ω |
| RS-232 Output Short-Circuit Current | | | | ±35 | ±60 | mA |
| RECEIVER INPUTS | | | | | | |
| Receiver Input Voltage Operating Range | | | -25 | | +25 | V |
| RS-232 Input Threshold Low | | | 0.75 | | | V |
| RS-232 Input Threshold High | | | | | 2.4 | V |
| RS-232 Input Hysteresis | | | | 0.65 | | V |

±15kV ESD-Protected, EMC-Compliant, 230kbps, 3-Tx/3-Rx RS-232 IC

MAX1406

ELECTRICAL CHARACTERISTICS (continued)

(V_{CC} = +4.5V to +5.5V, V_{DD} = +10.8V to +13.2V, V_{SS} = -10.8V to -13.2V, T_A = T_{MIN} to T_{MAX}, unless otherwise noted. Typical values are at T_A = +25°C.)

| PARAMETER | SYMBOL | CONDITIONS | MIN | TYP | MAX | UNITS |
|---------------------------------------|--------|---------------------------------|-----|-----|-----|-------|
| RECEIVER INPUTS (continued) | | | | | | |
| RS-232 Input Resistance | | | 3 | 5 | 7 | kΩ |
| Receiver Output Short-Circuit Current | | | | ±10 | | mA |
| ESD CHARACTERISTICS | | | | | | |
| ESD Protection | | Human Body Model | | ±15 | | kV |
| | | IEC1000-4-2 (Contact Discharge) | | ±8 | | |
| | | IEC1000-4-2 (Air-Gap Discharge) | | ±15 | | |

TIMING CHARACTERISTICS

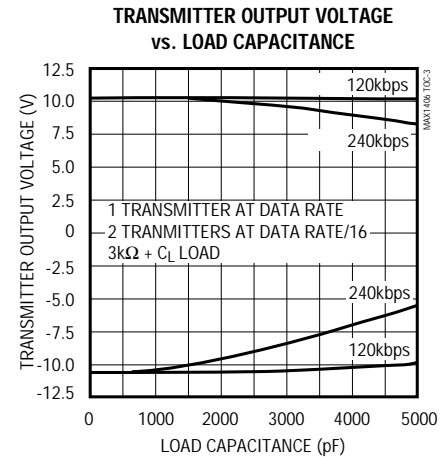
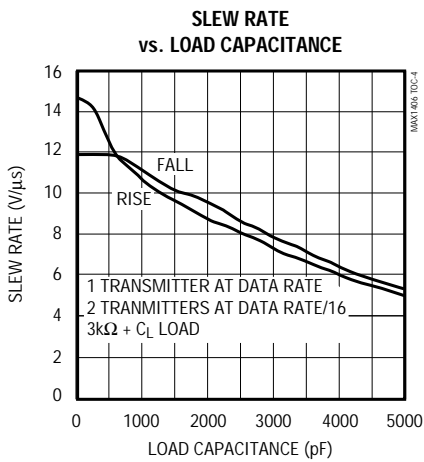
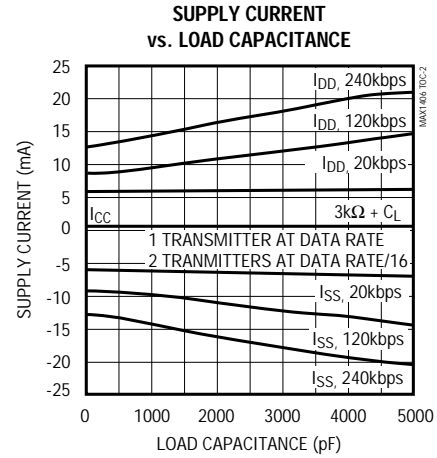
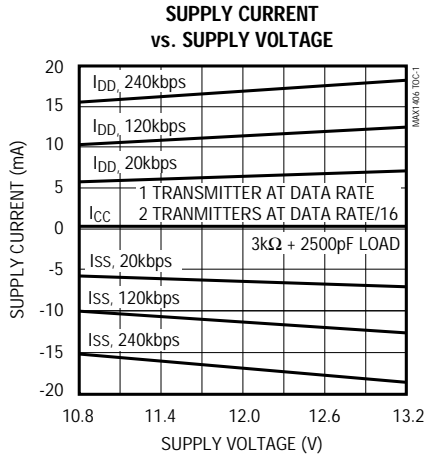
(T_A = +25°C, unless otherwise noted.)

| PARAMETER | SYMBOL | CONDITIONS | MIN | TYP | MAX | UNITS | |
|--|-------------------|--|----------------------------------|-----|-----|-------|------|
| Transmitter Output Propagation Delay, Low to High | t _{PLHT} | V _{DD} = 12V, V _{SS} = -12V, R _L = 3kΩ, C _L = 1000pF | | | 4 | μs | |
| Transmitter Output Propagation Delay, High to Low | t _{PLHT} | V _{DD} = 12V, V _{SS} = -12V, R _L = 3kΩ, C _L = 1000pF | | | 4 | μs | |
| Transmitter Propagation Delay Skew, t _{PLHT} - t _{PHLT} | t _{SKT} | V _{DD} = 12V, V _{SS} = -12V, R _L = 3kΩ, C _L = 1000pF | | | 0.4 | μs | |
| Transition Output Slew Rate | SR | V _{DD} = 12V, V _{SS} = -12V, R _L = 3kΩ to 7kΩ, measured from +3V to -3V or -3V to +3V | C _L = 150pF to 2500pF | 4 | 12 | 30 | V/μs |
| | | | C _L = 50pF to 1000pF | 8 | 12 | 30 | |
| Receiver Output Propagation Delay, Low to High | t _{PLHR} | V _{CC} = 5V, C _L = 50pF | | | 4.0 | μs | |
| Receiver Output Propagation Delay, High to Low | t _{PHLR} | V _{CC} = 5V, C _L = 50pF | | | 4.0 | μs | |
| Receiver Propagation Delay Skew, t _{PLHR} - t _{PHLR} | t _{SKR} | V _{CC} = 5V, C _L = 50pF | | | 0.4 | μs | |
| Guaranteed Data Rate | DR | V _{CC} = 5V, V _{DD} = 12V, V _{SS} = -12V, R _L = 3kΩ to 7kΩ | C _L = 150pF to 2500pF | 120 | | | kbps |
| | | | C _L = 50pF to 1000pF | 230 | | | |

±15kV ESD-Protected, EMC-Compliant, 230kbps, 3-Tx/3-Rx RS-232 IC

Typical Operating Characteristics

(V_{CC} = +5.0V, V_{DD} = +12.0V, V_{SS} = -12.0V, T_A = +25°C, unless otherwise noted.)



±15kV ESD-Protected, EMC-Compliant, 230kbps, 3-Tx/3-Rx RS-232 IC

MAX1406

Pin Description

| PIN | NAME | FUNCTION |
|------------|---------------------|--|
| 1 | V _{DD} | Supply-Voltage Input, +10.8V to +13.2V |
| 3, 5, 7 | T1OUT, T2OUT, T3OUT | Transmitter Outputs, swing between V _{DD} and V _{SS} |
| 2, 4, 6 | R1IN, R2IN, R3IN | Receiver Inputs |
| 8 | V _{SS} | Supply-Voltage Input, -10.8V to -13.2V |
| 9 | GND | Ground. Connect to system ground. |
| 10, 12, 14 | T3IN, T2IN, T1IN | Transmitter Inputs. Tie unused inputs to GND or V _{CC} . |
| 11, 13, 15 | R3OUT, R2OUT, R1OUT | Receiver Outputs, swing between GND and V _{CC} |
| 16 | V _{CC} | Supply-Voltage Input, +4.5V to +5.5V |

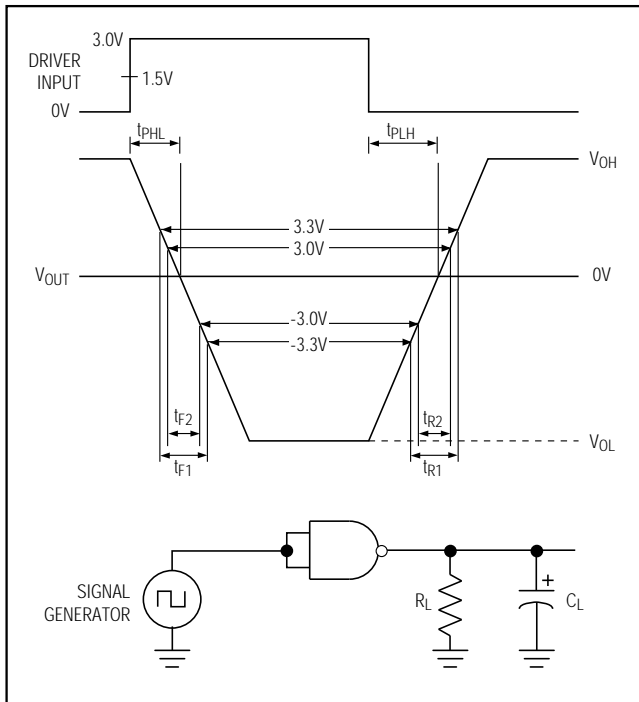


Figure 1. Slew-Rate Test Circuit and Timing Diagram

Detailed Description

RS-232 Transmitters

The transmitters are inverting level translators that convert CMOS-logic input levels to an EIA/TIA-232 voltage between ±5V and ±13.2V, into a load between 3kΩ and 7kΩ. The MAX1406 guarantees a 230kbps data rate with a worst-case load of 3kΩ and 1000pF, providing compatibility with PC-to-PC communication software.

When the power is off, the MAX1406 outputs are permitted to be driven up to ±15V. The transmitter inputs do not have internal pull-up resistors. Connect unused inputs to GND or V_{CC}.

RS-232 Receivers

The receiver inputs invert and convert the RS-232 signals to CMOS-logic output levels. The MAX1406 has hysteresis of 650mV. The receiver output swings between GND and V_{CC}.

±15kV ESD Protection

As with all Maxim devices, electrostatic discharge (ESD) protection structures are incorporated on all pins to protect against ESD encountered during handling and assembly. The MAX1406 driver outputs and receiver inputs have extra protection against static electricity found in normal operation. Maxim's engineers developed state-of-the-art structures to protect these pins against ±15kV ESD without damage. After an ESD event, the MAX1406 continues working without latchup.

ESD protection can be tested in several ways. The transmitter outputs and the receiver inputs are characterized for protection to the following:

- 1) ±15kV using the Human Body Model
- 2) ±8kV using the Contact-Discharge method specified in IEC1000-4-2 (formerly IEC801-2)
- 3) ±15kV using the Air-Gap Discharge method specified in IEC1000-4-2 (formerly IEC801-2)

ESD Test Conditions

ESD performance depends on a number of conditions. Contact Maxim for a reliability report that documents test setup, methodology, and results.

±15kV ESD-Protected, EMC-Compliant, 230kbps, 3-Tx/3-Rx RS-232 IC

Human Body Model

Figure 2a shows the Human Body Model, and Figure 2b shows the current waveform it generates when discharged into a low impedance. This model consists of a 100pF capacitor charged to the ESD voltage of interest, which is then discharged into the device through a 1.5kΩ resistor.

IEC1000-4-2

The IEC1000-4-2 standard covers ESD testing and performance of finished equipment; it does not specifically refer to integrated circuits. The MAX1406 helps you design equipment that meets Level 4 (the highest level) of IEC1000-4-2, without additional ESD-protection components.

The main difference between tests done using the Human Body Model and IEC1000-4-2 is higher peak current in IEC1000-4-2 (Figure 3). Because series resistance is lower in the IEC1000-4-2 ESD test model, the

ESD withstand voltage measured to this standard is generally lower than that measured using the Human Body Model. Figure 3b shows the current waveform for the ±8kV IEC1000-4-2 Level 4 ESD Contact-Discharge test.

The Air-Gap test involves approaching the device with a charge probe. The Contact-Discharge method connects the probe to the device before the probe is energized.

Machine Model

The Machine Model for ESD testing uses a 200pF storage capacitor and zero-discharge resistance. It mimics the stress caused by handling during manufacturing and assembly. Of course, all pins (not just RS-232 inputs and outputs) require this protection during manufacturing. Therefore, the Machine Model is less relevant to the I/O ports than are the Human Body Model and IEC1000-4-2.

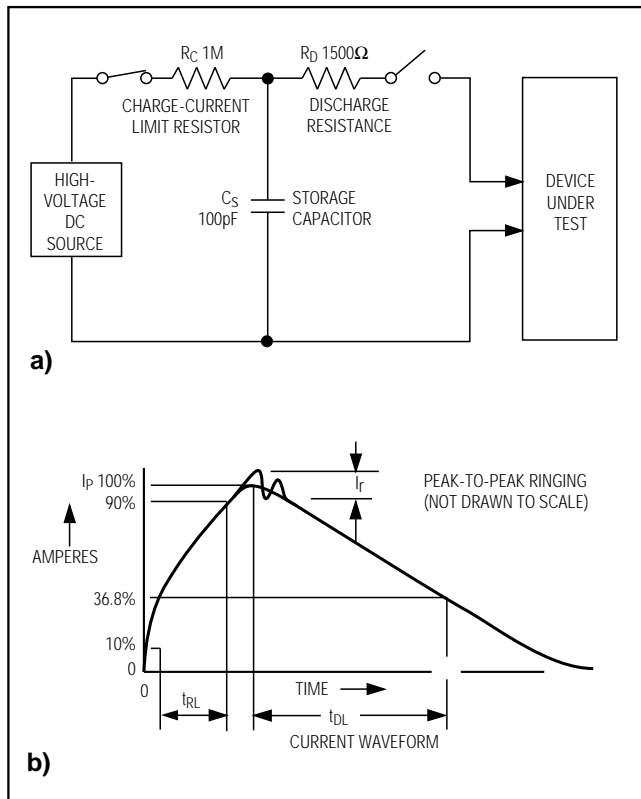


Figure 2. Human Body ESD Test Model and ESD-Generator Current Waveform

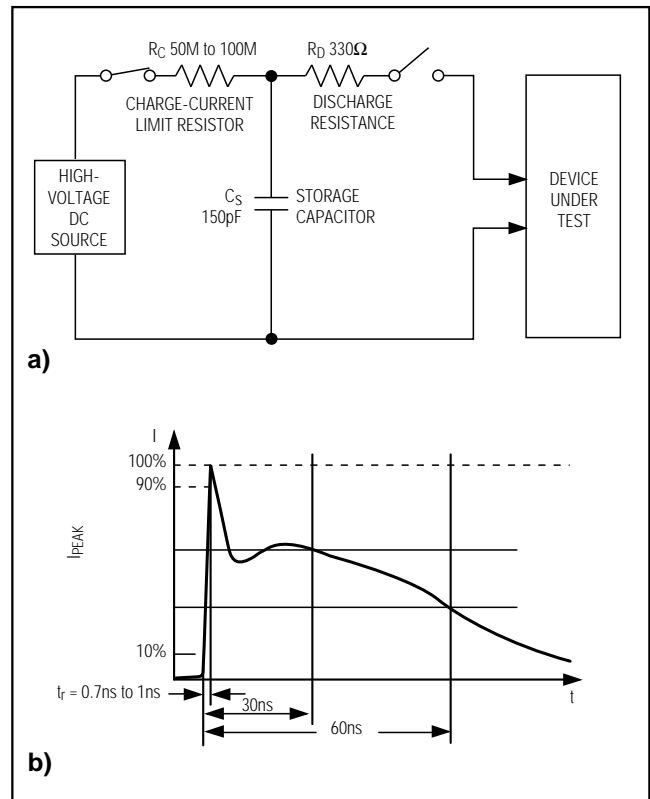


Figure 3. IEC1000-4-2 Test Model and ESD-Generator Current Waveform

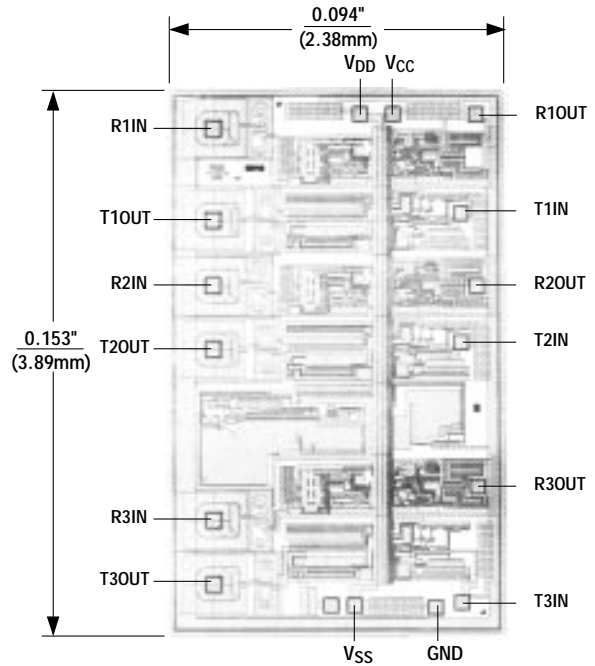
$\pm 15\text{kV}$ ESD-Protected, EMC-Compliant, 230kbps, 3-Tx/3-Rx RS-232 IC

Applications Information

Because the MAX1406 is not sensitive to power-supply sequencing, no external protection diodes are required. Any of the three supplies can power up first. However, use proper layout techniques to ensure other devices on your board are not damaged in case of an ESD event.

- Minimize the ground-lead return path to the power supply, because currents as high as 60A can pass into the ground.
- Use a separate return path to the power supply.
- Make trace widths greater than 40 mils.
- Bypass V_{CC} , V_{DD} , and V_{SS} with $0.1\mu\text{F}$ capacitors as close to the MAX1406 as possible to ensure maximum ESD protection.
- Tie any unused transmitter inputs to GND or V_{CC} to minimize power consumption.

Chip Topography



MAX1406

TRANSISTOR COUNT: 161

SUBSTRATE CONNECTED TO GND

$\pm 15\text{kV}$ ESD-Protected, EMC-Compliant,
230kbps, 3-Tx/3-Rx, RS-232 IC

Package Information

**Plastic DIP
PLASTIC
DUAL-IN-LINE
PACKAGE
(0.300 in.)**

| DIM | INCHES | | MILLIMETERS | |
|-----|--------|-------|-------------|-------|
| | MIN | MAX | MIN | MAX |
| A | — | 0.200 | — | 5.08 |
| A1 | 0.015 | — | 0.38 | — |
| A2 | 0.125 | 0.175 | 3.18 | 4.45 |
| A3 | 0.055 | 0.080 | 1.40 | 2.03 |
| B | 0.016 | 0.022 | 0.41 | 0.56 |
| B1 | 0.045 | 0.065 | 1.14 | 1.65 |
| C | 0.008 | 0.012 | 0.20 | 0.30 |
| D1 | 0.005 | 0.080 | 0.13 | 2.03 |
| E | 0.300 | 0.325 | 7.62 | 8.26 |
| E1 | 0.240 | 0.310 | 6.10 | 7.87 |
| e | 0.100 | — | 2.54 | — |
| eA | 0.300 | — | 7.62 | — |
| eB | — | 0.400 | — | 10.16 |
| L | 0.115 | 0.150 | 2.92 | 3.81 |

| PKG. | DIM | PINS | INCHES | | MILLIMETERS | |
|------|-----|------|--------|-------|-------------|-------|
| | | | MIN | MAX | MIN | MAX |
| P | D | 8 | 0.348 | 0.390 | 8.84 | 9.91 |
| P | D | 14 | 0.735 | 0.765 | 18.67 | 19.43 |
| P | D | 16 | 0.745 | 0.765 | 18.92 | 19.43 |
| P | D | 18 | 0.885 | 0.915 | 22.48 | 23.24 |
| P | D | 20 | 1.015 | 1.045 | 25.78 | 26.54 |
| N | D | 24 | 1.14 | 1.265 | 28.96 | 32.13 |

21-0043A

**Wide SO
SMALL-OUTLINE
PACKAGE
(0.300 in.)**

| DIM | INCHES | | MILLIMETERS | |
|-----|--------|-------|-------------|-------|
| | MIN | MAX | MIN | MAX |
| A | 0.093 | 0.104 | 2.35 | 2.65 |
| A1 | 0.004 | 0.012 | 0.10 | 0.30 |
| B | 0.014 | 0.019 | 0.35 | 0.49 |
| C | 0.009 | 0.013 | 0.23 | 0.32 |
| E | 0.291 | 0.299 | 7.40 | 7.60 |
| e | 0.050 | | 1.27 | |
| H | 0.394 | 0.419 | 10.00 | 10.65 |
| L | 0.016 | 0.050 | 0.40 | 1.27 |

| DIM | PINS | INCHES | | MILLIMETERS | |
|-----|------|--------|-------|-------------|-------|
| | | MIN | MAX | MIN | MAX |
| D | 16 | 0.398 | 0.413 | 10.10 | 10.50 |
| D | 18 | 0.447 | 0.463 | 11.35 | 11.75 |
| D | 20 | 0.496 | 0.512 | 12.60 | 13.00 |
| D | 24 | 0.598 | 0.614 | 15.20 | 15.60 |
| D | 28 | 0.697 | 0.713 | 17.70 | 18.10 |

21-0042A

Maxim cannot assume responsibility for use of any circuitry other than circuitry entirely embodied in a Maxim product. No circuit patent licenses are implied. Maxim reserves the right to change the circuitry and specifications without notice at any time.

8 Maxim Integrated Products, 120 San Gabriel Drive, Sunnyvale, CA 94086 (408) 737-7600